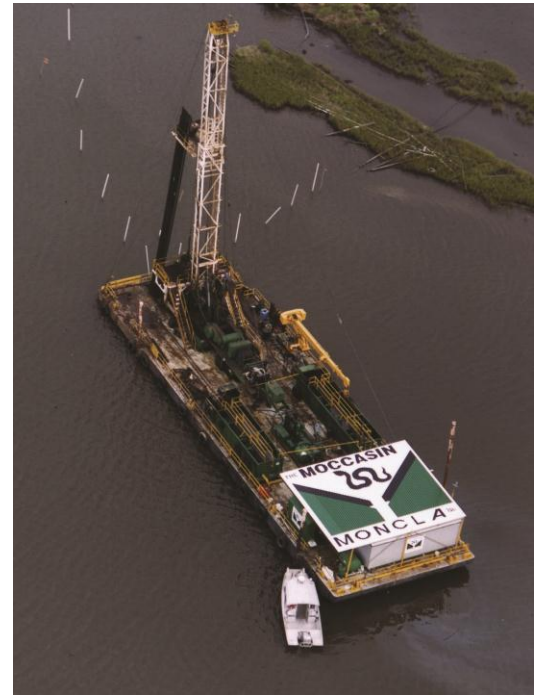


Rig #104 “The Moccasin”

24-hour keyway workover barge **Description**

130' x 40'8" x 6'8", Keyway length 20' width 8' Drafts 2' Barge # CB 22 3 Spuds,

Clear Height above the barge – 15'



Specifications

Rig and Drawworks: IDECO Hydrair H-37 model 308 “Rambler” SN #966 Single Drum, 5 Axle Drive In

Engines: Caterpillar 3406E – 550HP, Allison 5961 transmission

Derrick: 103' / 212,000 telescoping Derrick Note: With 1 inch drill line the maximum hook load is 168,000 lbs on 6 lines and 112,000 lbs on 4 lines

Brakes: 37" x 10" Forged Steel with Water Splash cooling

Mud System: Gardner Denver PAH Triplex Pump with 4-1/2' Lines Powered by GM 8V-71 diesel engine 180 Barrel Mud Tank (active tank), 180 Barrel holding tank Centrifugal pump powered by Detroit 471 Diesel Engine with Hopper Skidded

Generator: 200 KW Aggreko

Traveling Equipment: McKissick 100 ton Traveling Block 2 3/8 and 2 7/8 elevators Complete set of rod tools (if needed)

Tubing Tongs: Foster Type 58-93R

Air Slips: Cavins Type C for 2- 3/8, 2 – 7/8

Lagniappe: Sub-structured working platform, Pusher House, Dog House, Diesel Tank, 750 Gallons, 1000 Gallon Fresh water Tank, Circulating Manifold.

Crane: 10 Ton Galion Cherry Picker
